

GHH RAND®

CF180R – Oil-Injected Screw Compressor Airend

The CF180R is a single stage oil-injected screw compressor airend for belt drive and direct drive systems, which can be used for general industrial applications.

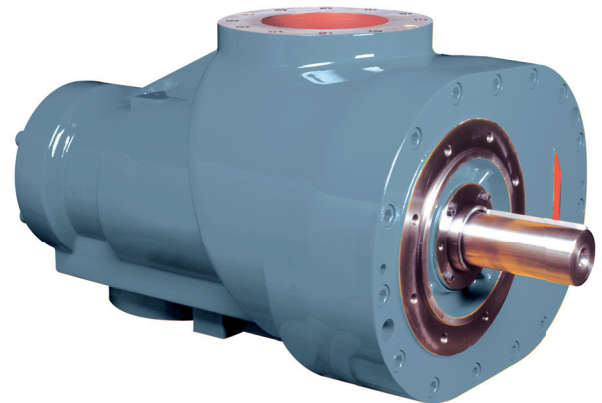
Operating Range

Parameters	Units	Min	Max
Power	kW / hp	38.8/ 52	385.4/517
Discharge Pressure, abs.	bar /psi	6 / 87	16 / 232
Volume Flow	m ³ /min / cfm	7.9 / 278	41.4/1462

Medium: Air, Inlet temp. 20°C/68°F, Discharge temp. 80°C/176°F, Inlet pressure 1 bar(a)/14.5 psi(a), RH: 60%

Technical Data

Parameters	Units	Data
Length	mm	987
Width	mm	626
Height	mm	535
Weight	kg	725
Inlet DN	mm	200
Outlet DN	mm	150



GHH RAND recommends:



- Maximize life and efficiency with Primecool or Primecool Plus (food grade)
- Ask your sales rep. for details

Ingersoll-Rand Trading GmbH
Max-Planck-Ring 27 • 46049 Oberhausen • Germany
Phone +49 (0) 208 9994-0 • Fax +49 (0) 208 9994-111
industrial-sales@ghhrand.com • www.ghhrand.com