

GHH RAND®

CF1500H – Oil-Injected Screw Compressor Airend

The CF1500H is a double stage oil-injected screw compressor airend with an integrated gear drive, which can be used for drilling and general industrial applications.

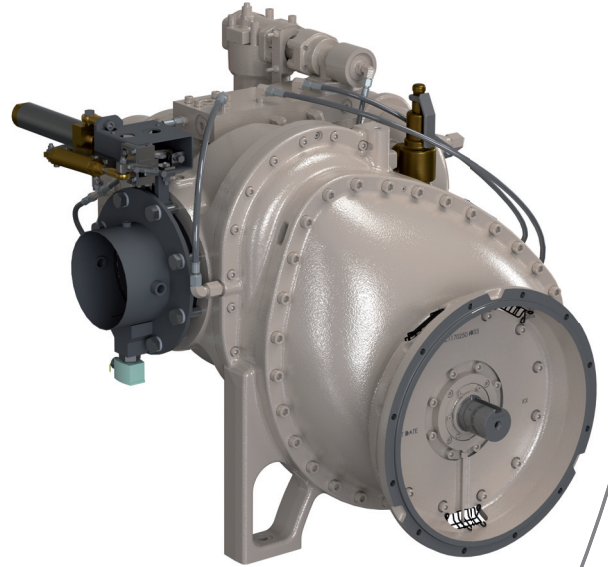
Operating Range

Parameters	Units	Min	Max
Power	kW / hp	340 / 456	532 / 714
Discharge Pressure, abs.	bar / psi	13.8 / 200	34.5 / 500
Volume Flow	m ³ /min / cfm	38.7 / 1,365	42,5 / 1,500

Medium: Air, Inlet temp. 20°C/68°F, Discharge temp. 80°C/176°F, Inlet pressure 1 bar(a)/14.5 psi(a), RH: 60%

Technical Data

Parameters	Units	Data
Length	mm / in	1,181 / 46.5
Width	mm / in	838 / 33
Height	mm / in	991 / 39
Weight	kg / lb	1,043 / 2,300
Inlet DN	mm / in	203 / 8
Outlet DN	mm / in	63.5 / 2.5



GHH RAND recommends:



- Maximize life and efficiency with Primecool or Primecool Plus (food grade)
- Ask your sales rep. for details

Ingersoll Rand Trading GmbH

Max-Planck-Ring 27 • 46049 Oberhausen • Germany

Phone +49 (0) 208 9994-0 • Fax +49 (0) 208 9994-111

industrial-sales@ghhrand.com • oem-solutions.ingersollrand.com